

REV.	DESCRIPTION	DRAWN	CHECKED	APPROVED
A	NEW RELEASE	LJH 04/27/05'	~	LJH 04/22/06'
B	ADD SCREW TYPE	DMJ 06/27/07'	~	LJC 06/27/07'
C	整理图面	YCH 05/21/08'	~	LJC 05/21/08'
F	ADD Pos TYPE	JLZ 03/29/16'	~	

NOTES:

1. ELECTRICAL CHARACTERISTICS:

- 1.1 CONTACT RESISTANCE: 20mΩ Max. INITIAL.
- 1.2 DIELECTRIC WITHSTANDING VOLTAGE: 500V AC(rms) FOR 1 MINUTE.
- 1.3 INSULATION RESISTANCE: 1000MΩ Min.

2. ENVIRONMENT CHARACTERISTICS:

TEMPERATURE RANGE: -40°C~+105°C.

3. PART NUMBER: DS1034

4. PRODUCT NUMBER CODE:

DS1034- X X X X X X X

- Screw DIM. A
- S: Standard(W/O nut)
- 1: 5.00 2: 3.00 3: 5.20
- 4: 4.80 5: 5.80 6: 4.00
- 7: 4.80mm(Inside thread M2.6*0.45p, outside thread unc#4-40)
- 8: 4.80mm(Inside thread M3.0*0.5p, outside thread unc#4-40)

- Screw type
- S: Standard(W/O nut)
- 1: CC type 2: CS type
- 3: BR type 4: BRJ type DIM. B:6.00 C: 3~4mm
- 5: BRJ type DIM. B:6.00 C: 5~6mm
- 6: BRJ type DIM. B:6.00 C: 3~4mm (Inside thread M2.6*0.45P, outside thread unc#4-40)
- 7: BRJ type DIM. B:6.00 C: 3~4mm (Inside thread M3.0*0.50P, outside thread unc#4-40)

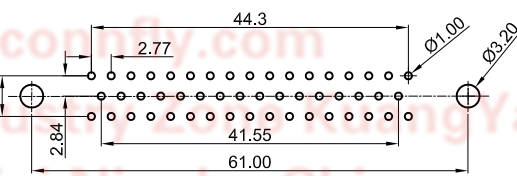
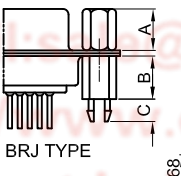
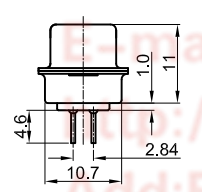
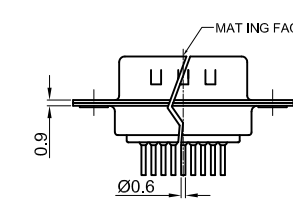
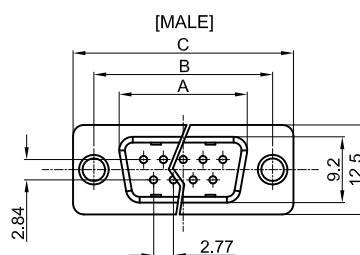
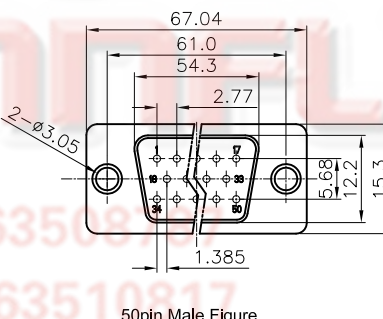
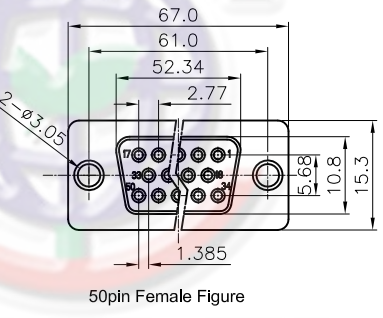
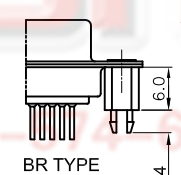
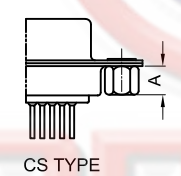
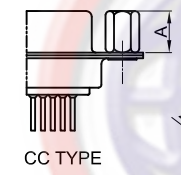
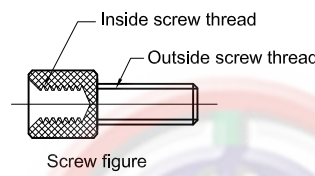
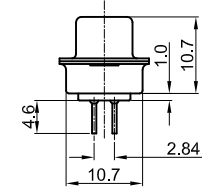
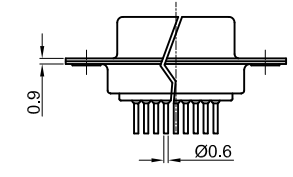
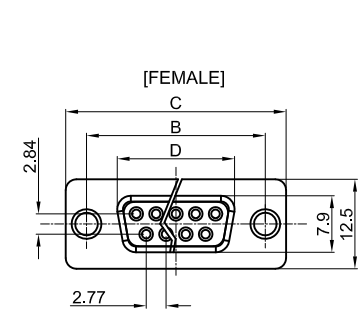
- Contact plating
- Si: Full gold flash
- 0: Selective gold flash

- Shell plating
- T: Fornt & back shell tin
- N: Fornt shell nickel, Back shell tin

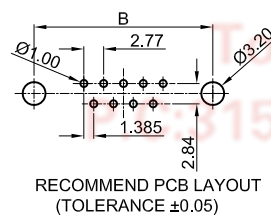
- Housing color
- B: Black W: White
- U: Blue

- Connector type
- M: Male F: Female

- No.of contacts
- 09: 9pos. 15: 15pos. 25: 25pos.
- 37: 37pos. 50: 50pos.




Dimension	Position	A±0.2	B±0.2	C±0.3	D
	9	17.90	24.99	30.80	16.33
	15	26.50	33.32	39.14	24.66
	25	40.00	47.04	53.04	38.38
	37	56.50	63.50	69.32	54.84



GENERAL TOLERANCE	ANGLE TOLERANCE
X. ±0.60	X. ±5°
.X ±0.38	.X ±3°
.XX ±0.25	.XX ±2°

PROJECTION	TITLE	D-SUB DIP STRAIGHT TYPE	
UNITS	mm	SHEET	DS1034 SERIES
SHEET SIZE	A4	SERIES	DS1034 SERIES

DRAWING TYPE	CUSTOMER
SCALE	1:1 SHEET 1 OF 1
DRAWING NO.	C-DS1034-XXXXXXX-F

 **晨翔电子有限公司**
CONNFLY CONNFLY ELECTRONIC CO. LTD