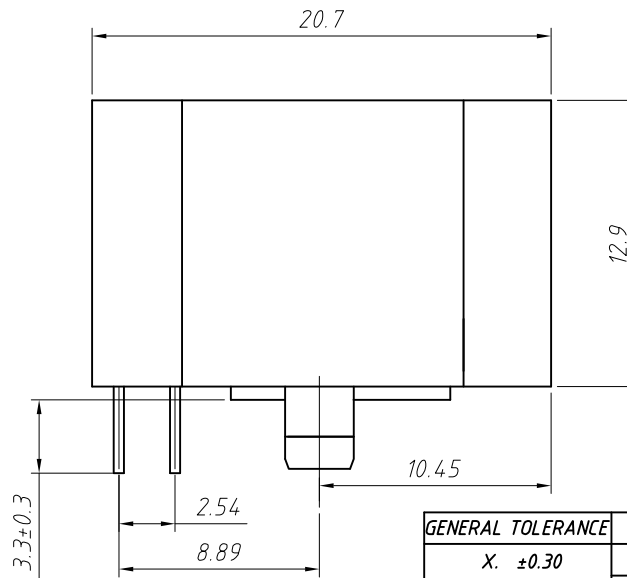
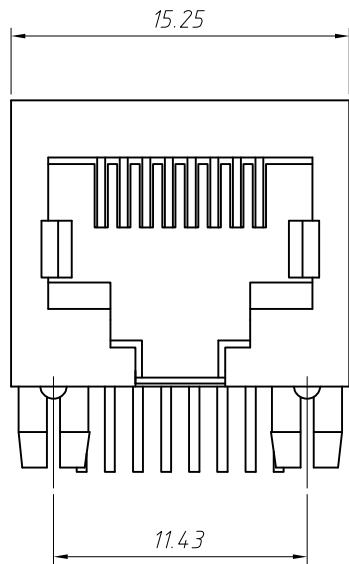
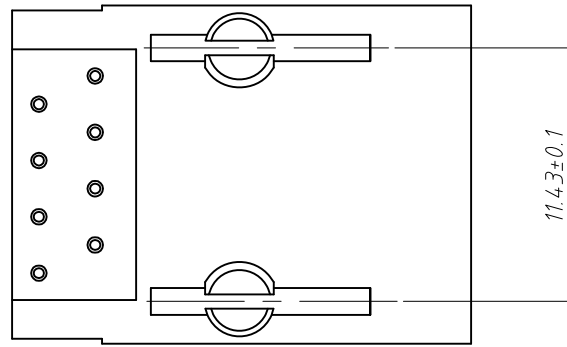


PCB Layout



Material:  
Housing: PBT+Glass Filled Polyester  
Flammability Rating : UL94V-0  
Contacts: Phosphor Bronze  $\phi 0.46\text{mm}$   
Plating: Gold Plating

Electrical:  
Voltage Rating: 125VAC  
Current Rating: 1.5A  
Contact Resistance: 30m $\Omega$  Max.  
Insulation Resistance: 500M $\Omega$  Min.  
Dielectric Strength: 1000VAC Rms 50Hz, 1 Min.  
Durability: 600 cycles Min.  
Operation Temperature: -40°C ~ +70°C

Order Information

L-KLS12-151-8P8C - 1 - XX

RoHS  
Contacts: 8P8C  
Color Code:  
1- Black  
Plating Code:  
01-Fu" Gold Plating  
02-3u" Gold Plating  
03-6u" Gold Plating  
04-15u" Gold Plating  
05-30u" Gold Plating

GENERAL TOLERANCE	PROJECTION		Description:
X. $\pm 0.30$	UNITS	mm	Modular jacks RJ45-8P8C 1x1 without Shield
.X $\pm 0.25$	SCALE	1:1	
.XX $\pm 0.20$	Draw by:	Jenny	KLS P/N: L-KLS12-151-8P8C-1-xx
ANGLE TOLERANCE	Check by:	Daniel	NingBo KLS ELECTRONIC CO.,LTD.
X. $\pm 3^\circ$	Date	2018-03-01	
.X $\pm 2^\circ$	SHEET	1 OF 1	
.XX $\pm 1^\circ$			