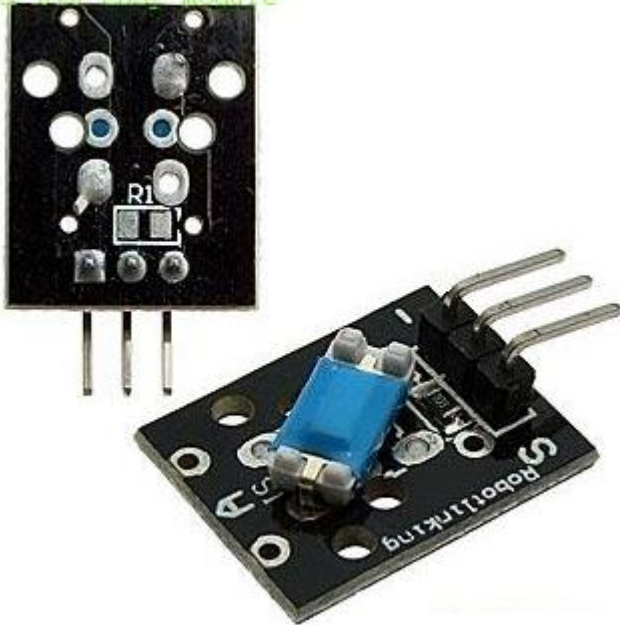


KY-020 easy module

KY-020 easy module



Tilt switch module and digital 13 interface with LED to build a simple circuit, the production of tilt tips

Using the digital 13 interface LED, will tilt switch sensor access digital 3 interface, when the tilt switch sensor sensing to have the key signal, LED light, and vice versa.

Li Chengyuan Code:

```
Int Led=13; // LED interface definition
Int buttonpin=3; // define tilt switch sensor interface
Int Val; // define digital variable val
Setup void ()
{
PinMode (Led, OUTPUT); // LED was defined as the output interface
PinMode (buttonpin, INPUT); // define tilt switch sensor output interface
}
Loop void ()
{
Val=digitalRead (buttonpin); // digital interface 3 the value read is assigned to val
If (val==HIGH) // when the tilt switch sensor signal, LED flashing
{
DigitalWrite (Led, HIGH);
}
Else
{
DigitalWrite (Led, LOW);
}
```