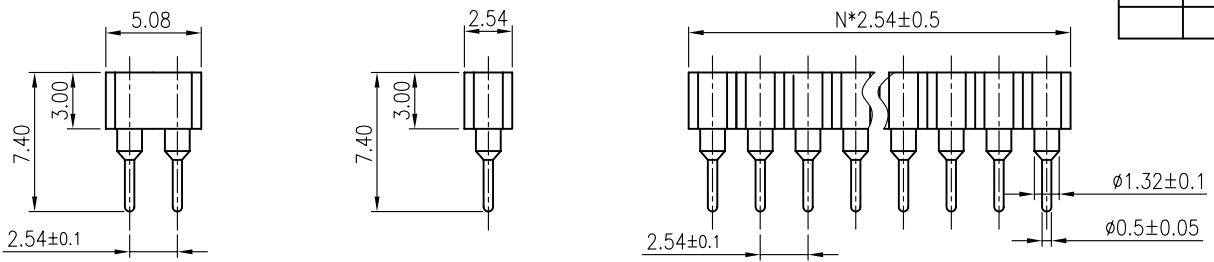


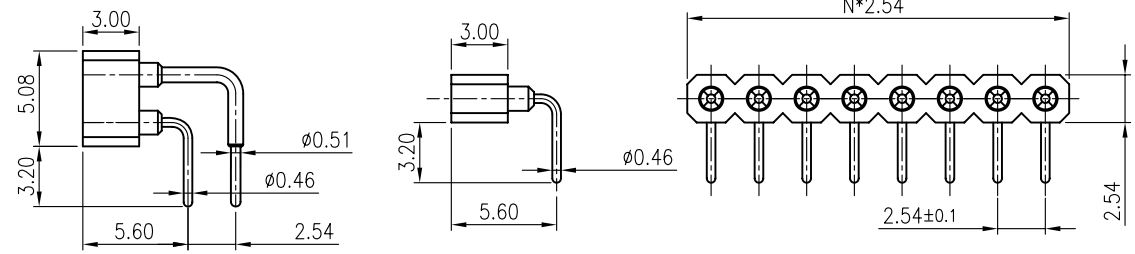
REV.	DESCRIPTION	DRAWN	CHECKED	APPROVED
A	NEW RELEASE	LL 07/02/06'		

- NOTES:
- ELECTRICAL CHARACTERISTICS:
    - CONTACT RESISTANCE: 20mΩ Max.
    - DIELECTRIC WITHSTANDING VOLTAGE: 500V AC(rms) FOR 1 MINUTE.
    - INSULATION RESISTANCE: 1000MΩ Min.
  - MECHANICAL CHARACTERISTICS:
    - CONTACT RETENTION FORCE: 1000g Min.
  - ENVIRONMENT CHARACTERISTICS:
    - OPERATING TEMPERATURE: 0°C~+85°C.
    - STORAGE TEMPERATURE: -20°C~+70°C.
  - PRODUCT NUMBER CODE:
 

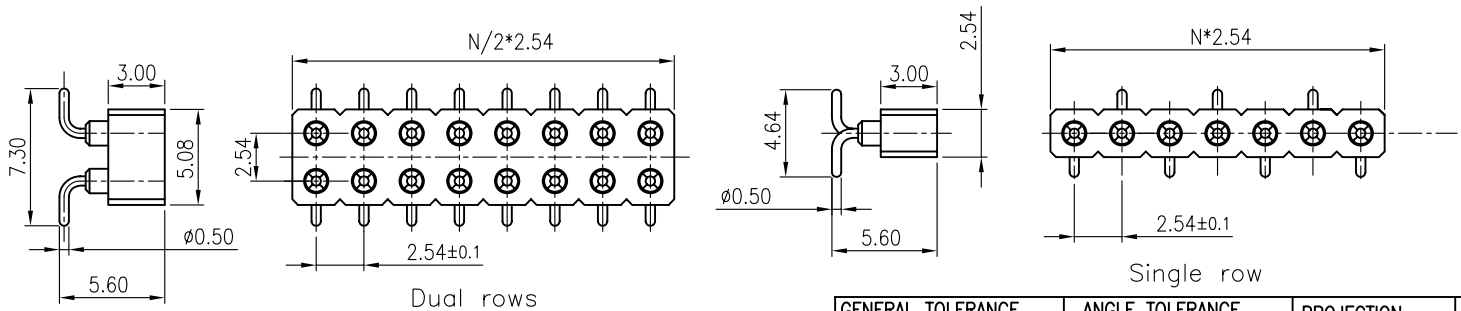
DS1002-01 - X X X X



Dual rows  
Single row  
V/T TYPE



Dual rows  
Single row  
R/A TYPE



Dual rows  
Single row  
SMT TYPE

- Clip plating
  - Tin 150u"
  - Tin 200u"
  - G/F
  - Gold 3u"
  - Gold 10u"
  - Gold 15u"
- Pin plating
  - Tin 150u"
  - Tin 200u"
  - G/F
  - Gold 3u"
  - Gold 10u"
  - Gold 15u"
- Mounting type
  - V: V/T TYPE
  - R: R/A TYPE
  - S: SMT TYPE
- No. of contacts
  - 1\*1 - 1\*40
  - 2\*1 - 2\*40

N: No. of contacts

GENERAL TOLERANCE		ANGLE TOLERANCE		PROJECTION		TITLE	IC SOCKET R/A & V/T & SMT	
X.	±0.60	X.	±5'	UNITS	mm		PITCH 2.54mm	
.X	±0.38	.X	±3'	SHEET SIZE	A4	SERIES	DS1002-01 SERIES	
.XX	±0.25	.XX	±2'	SCSL 1002-01				
DRAWING TYPE		CUSTOMER						
SCALE		1:1	SHEET		10F1			
DRAWING NO.		C-DS1002-01-XXXX						