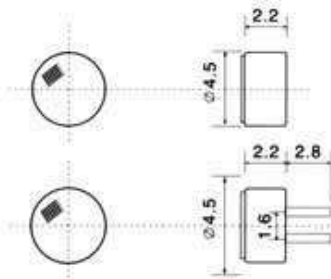


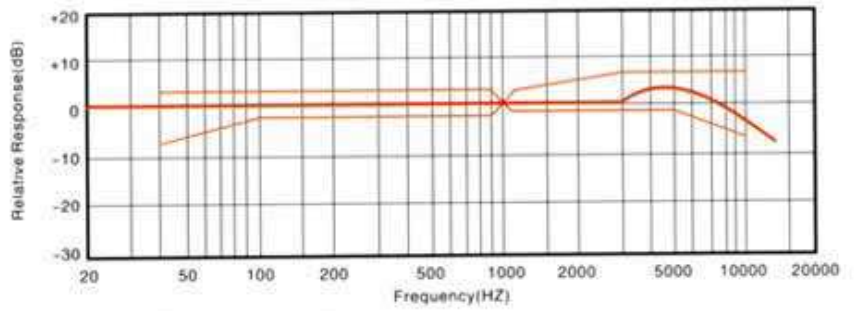


contact:

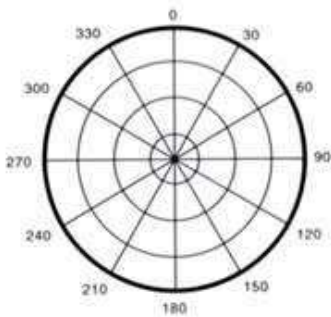
Dimension Drawing(Unit:mm)



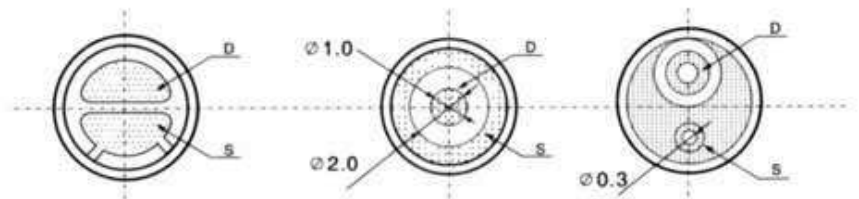
Typical Frequency Response Curve



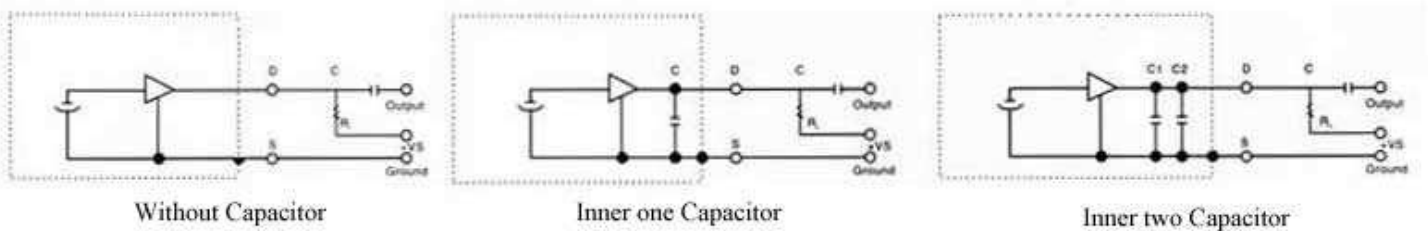
Polar Directivity Pattern



Connection Method



Measure Cricuit



## *Detail Specifications:*

Model No.	DGO4522DD(-PC1033)		
Sensitivity(0dB=1v/ $\mu$ bar,1KHz)	-36dB ~ -46dB	Operation Voltage(Max./Std.)	2V
Impedance	Low impedance(2.2K $\Omega$ -30% )	Resistance(RL):	2.2K $\Omega$
Directivity	Omni-directinal	Current Consumption:	Max.0.5.mA
Frequency	20~16, 000Hz	Sensitivity Reduction	Within -3dB at 1.5V
Max.operation voltage	10V	S/N Ratio	More than 58dB